

**NOTES**

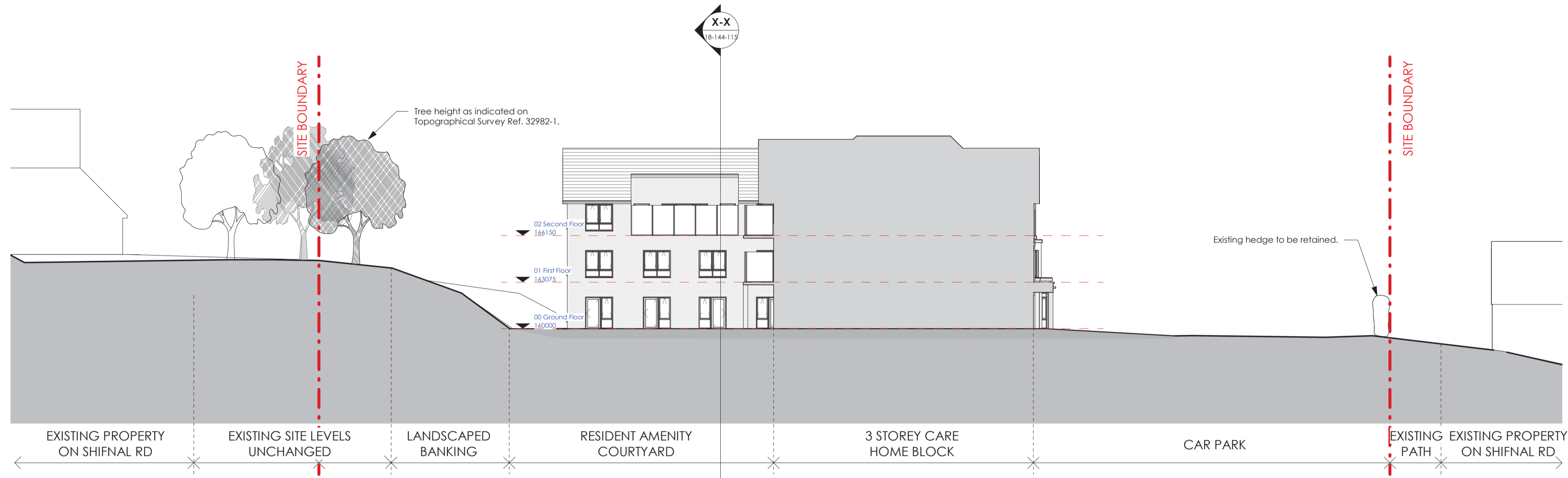
- Ⓒ This drawing is copyright of Candy and Lofthouse Ltd. and may not be reproduced in any way without their specific permission.
- Ⓓ All dimensions are to be checked on site. Do not scale from this drawing. Work to figured dimensions only. Any queries please contact the architect.

**MATERIALS PROHIBITED**

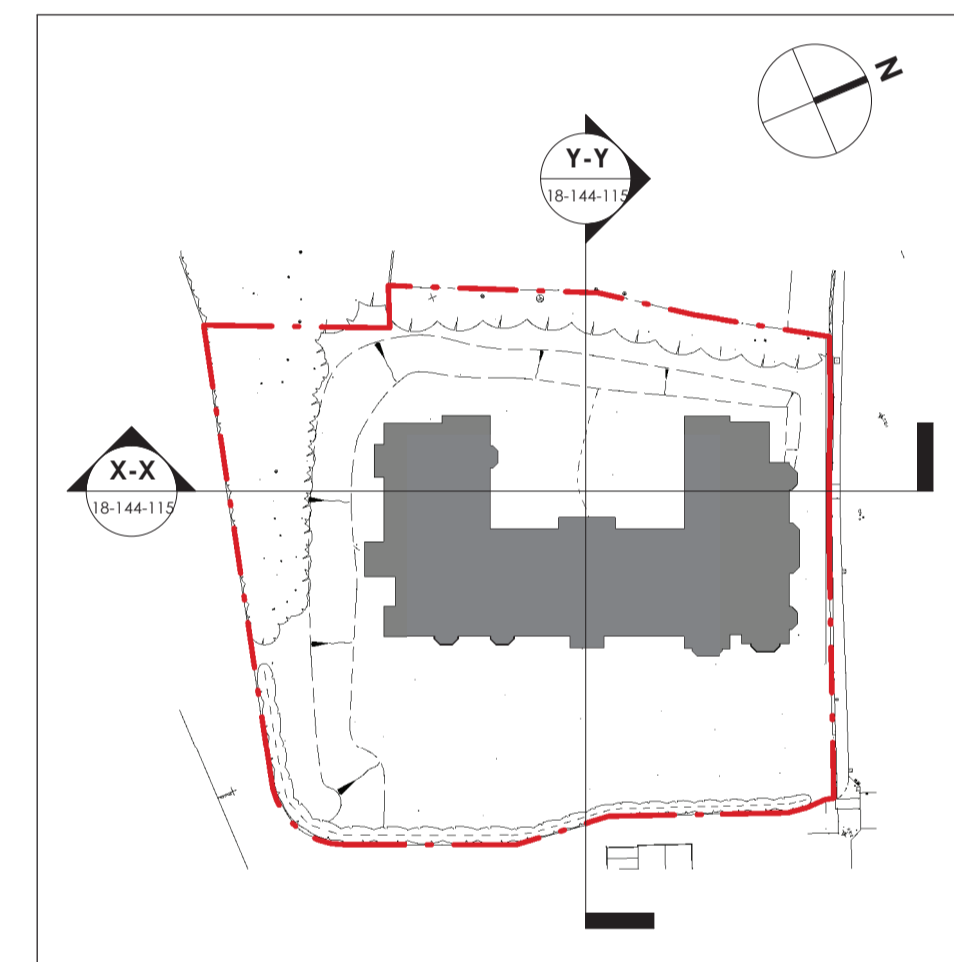
- Materials prohibited from use, except where used in accordance with 'Good Practice in the Selection of Construction Materials [March 2011]' or unless required by the Contract:
- a) high alumina cement in the structural elements;
  - b) wood used as permanent formwork for concrete;
  - c) calcium chloride admixtures for use in reinforced concrete;
  - d) asbestos or asbestos-containing products, as defined in the 'Control of Asbestos at Work Regulations, as amended 2006' or any other statutory modification or re-enactment thereof;
  - e) any naturally occurring or man made mineral fibres (for example, rock-wool or slag wool) with a thickness of 3 microns or less and a length of 200 microns or less, unless they are appropriately tested to prevent migration of fibres;
  - f) aggregates for use in reinforced concrete which do not comply with:
    - BS EN 12620:2002 Properties of aggregates used in concrete;
    - BS EN 12620:2002 Properties of aggregates used in mortar;
    - BS EN 12620:2002 Part 1 & 2 Properties of lightweight aggregates;
    - Guidance on avoiding alkali silica reaction and limiters on alkali content in BS EN 12620:2002 & Concrete Society Technical Report 50 (1999);
  - g) lead, lead paint or any other materials containing lead which may be ingested, inhaled or absorbed, except where copper alloy fittings also containing lead are specifically required in drinking water pipework by any relevant statutory requirement or where lead flashings or other lead roof coverings are specifically provided for in the Contract;
  - h) urea formaldehyde foam or materials which may release formaldehyde in quantities which may be hazardous with reference to the limits set by the Health and Safety Executive;
  - i) calcium silicate bricks or tiles;
  - j) vermiculite unless it is established as being fibre-free; calcium silicate bricks or tiles;
  - k) any products containing cadmium referred to in Statutory Instrument 2006/3311 Controls on dangerous substances and preparations Regulations 2006. Reference should also be made to 1981/202/EEC Cadmium and PVC;
  - l) any new timber treated with pentachlorophenol;
  - m) non approved metal structural fixings for building elements particularly susceptible to erosion;
  - n) concrete used in circumstances where it is susceptible to alkali/silica reaction;
  - o) materials containing chlorofluorocarbons (CFC's);
  - p) solvent based paints except where water based paints are unsuitable for unavailability;
  - q) any new materials not in accordance with statutory requirements, British Standards, Codes of Practice and good building practice current at the date of incorporation of the relevant materials into the Works or the specifications thereof.

**NOTES**

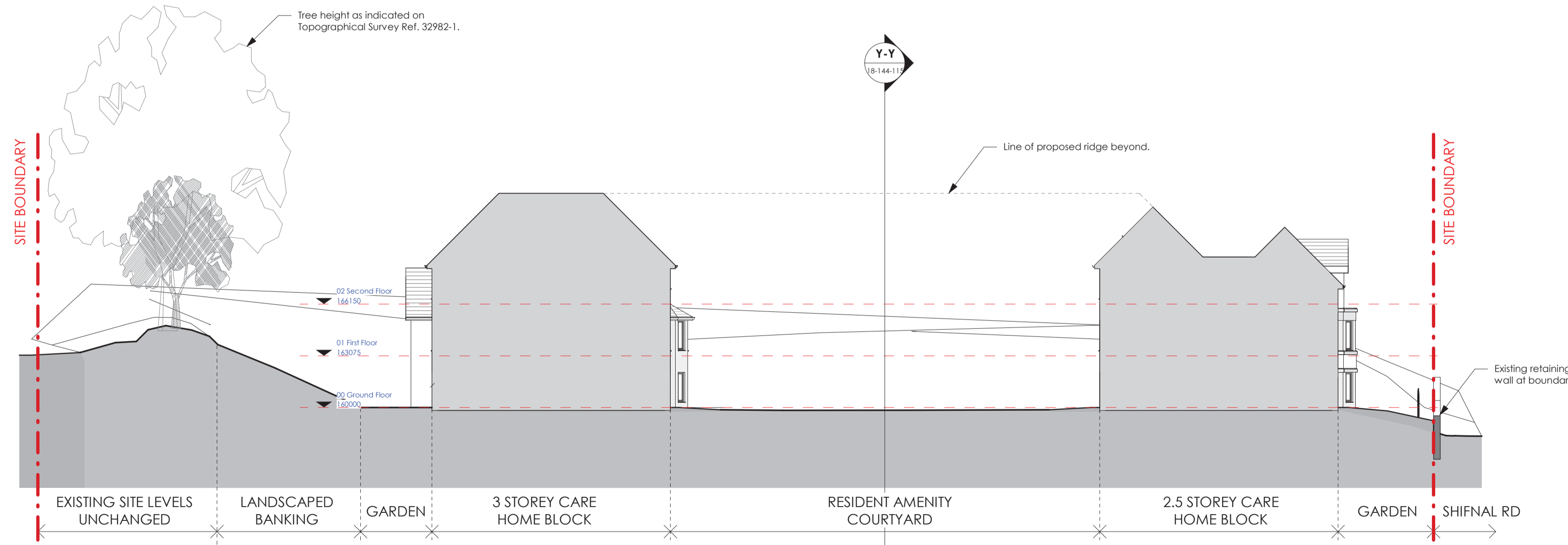
1. Scheme is for initial review, comment and approval, and subject to further detailed design and Statutory Approvals.
2. Ground Floor FFL +160.00 as confirmed by Care Development Ltd.
3. Site levels based on Topographical Survey Ref. 32982-1.



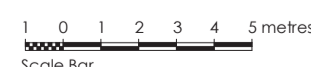
**SECTION X-X**



**KEY PLAN - SCALE 1:1000**



**SECTION Y-Y**



**SITE SECTIONS - PROPOSED**

**PLANNING APPLICATION**

**REVISION DETAILS** date / name

- Preliminary
- For Approval
- Tender
- Construction

**CLIENT**  
Care Developments (Midlands) Ltd

**PROJECT**  
Shifnal Road  
Telford  
TF2 9NN

**DRAWING TITLE**  
Site Sections - Proposed

**SCALE** drawn by  
1:200 @ A1 MP

**DRAWING NO.** revision  
18-144-115 ○



T: 0151 207 4371 • F: 0151 207 7087